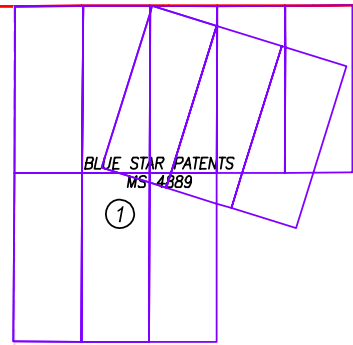


# MINERAL PATENTS

09-03

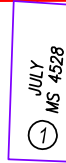
T.36N.R.50E.

02



BLUE STAR PATENTS  
MS 4589

①



JULY  
MS 4528

①

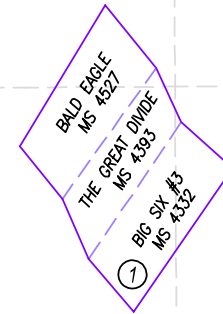
T.35N.R.50E.

4

3

2

1



BALD EAGLE  
MS 4527

THE GREAT DIVIDE  
MS 4593

BIG SIX #3  
MS 4332

①



HOLEY  
MS 4422

①

9

10

11

12

04



NOTE: This plot is for assessment purposes only and does not represent a survey. No liability is assumed as to the accuracy of the data delineated hereon. Use of this plot for other than assessment purposes is forbidden unless approved by the Eureka County Assessor's Office.

LYNN MINING DISTRICT

EUCDAS/NOV 2005/MM

SCALE: 1"=1700'

EUREKA COUNTY