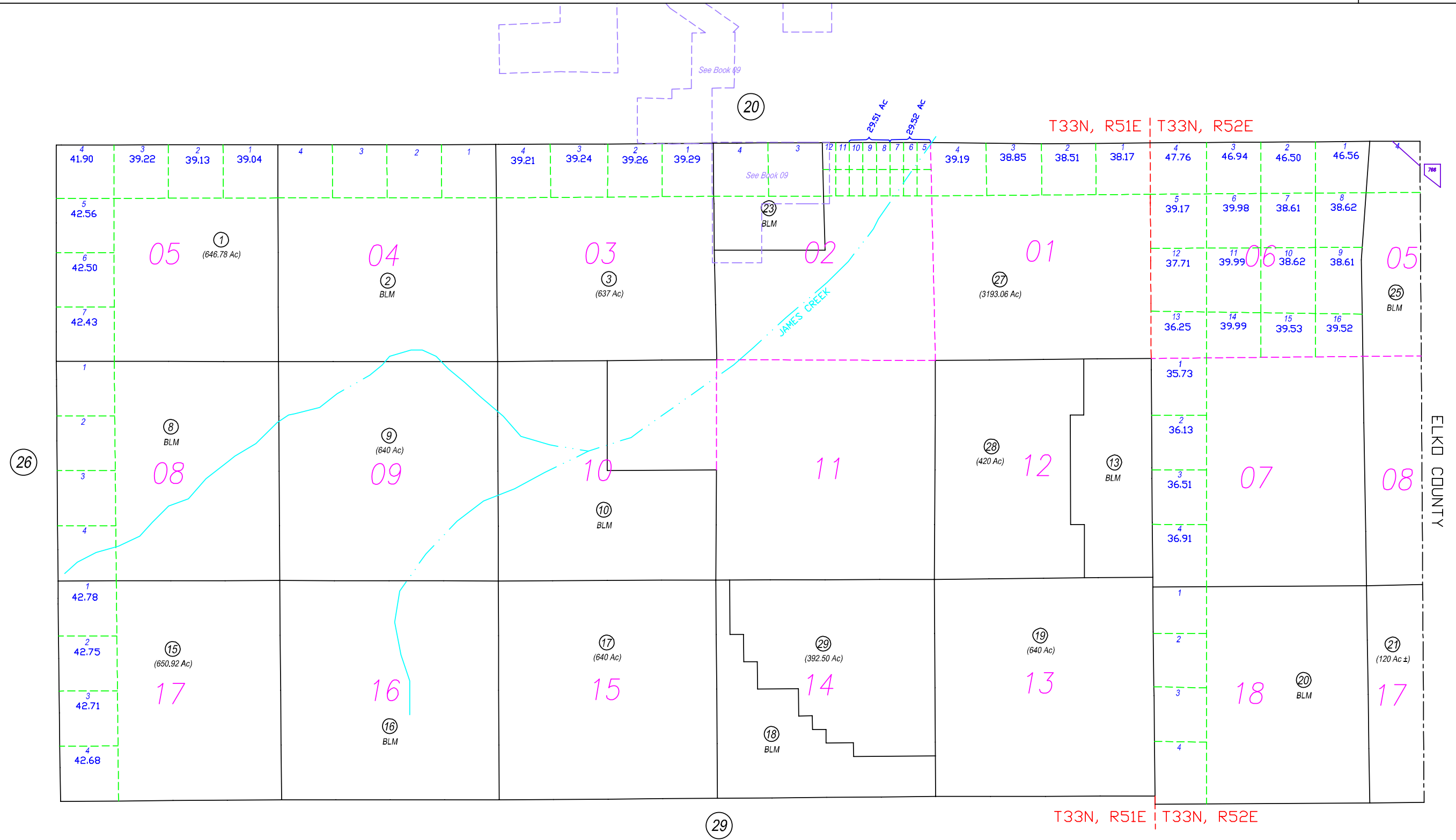


N2 - T33N, R51E & Por. N2 - T33N, R52E

04-28



NOTE: This plat is for assessment purposes only and does not represent a survey. No liability is assumed as to the accuracy of the data delineated hereon. Use of this plat for other than assessment purposes is forbidden unless approved by the Eureka County Assessor's Office.



REV/EUCDAS/JAN 2002/MM

EUCDAS/JAN 2000/MM
SCALE: 1"=2500'

EUREKA COUNTY