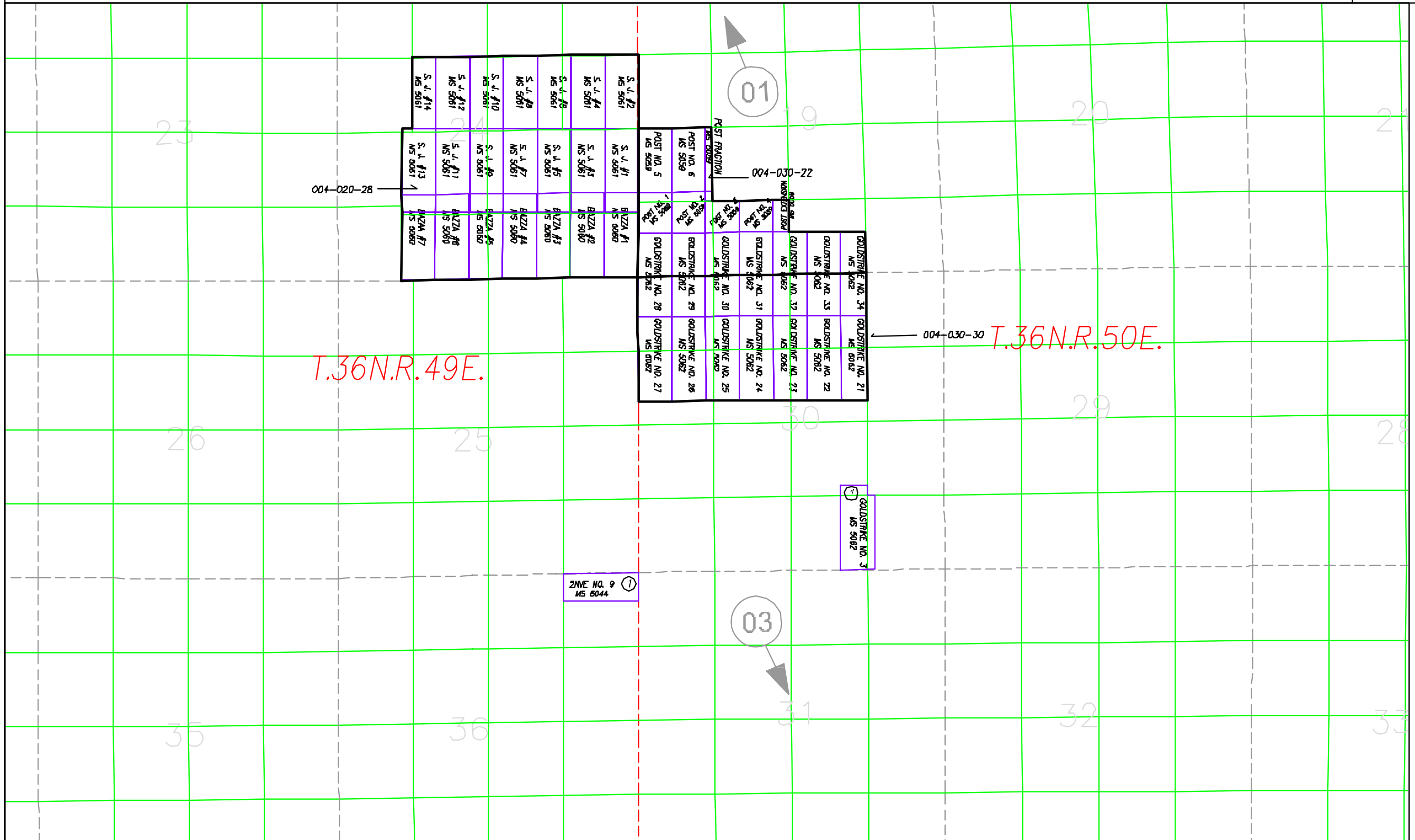


MINERAL PATENTS

09-02



004-020-28

01

03

T.36N.R.49E.

004-030-30 T.36N.R.50E.

ZONE NO. 9
MS 5044

GOLDSTRIKE NO. 3
MS 5082

POST NO. 5 MS 5059	POST NO. 6 MS 5059	POST NO. 7 MS 5059	POST NO. 8 MS 5059	POST NO. 9 MS 5059	POST NO. 10 MS 5059	POST NO. 11 MS 5059	POST NO. 12 MS 5059	POST NO. 13 MS 5059	POST NO. 14 MS 5059	POST NO. 15 MS 5059	POST NO. 16 MS 5059	POST NO. 17 MS 5059	POST NO. 18 MS 5059	POST NO. 19 MS 5059	POST NO. 20 MS 5059	POST NO. 21 MS 5059	POST NO. 22 MS 5059	POST NO. 23 MS 5059	POST NO. 24 MS 5059	POST NO. 25 MS 5059	POST NO. 26 MS 5059	POST NO. 27 MS 5059	POST NO. 28 MS 5059	POST NO. 29 MS 5059	POST NO. 30 MS 5059				
BZZA #1 MS 5080	BZZA #2 MS 5080	BZZA #3 MS 5080	BZZA #4 MS 5080	BZZA #5 MS 5080	BZZA #6 MS 5080	BZZA #7 MS 5080	BZZA #8 MS 5080	BZZA #9 MS 5080	BZZA #10 MS 5080	BZZA #11 MS 5080	BZZA #12 MS 5080	BZZA #13 MS 5080	BZZA #14 MS 5080	BZZA #15 MS 5080	BZZA #16 MS 5080	BZZA #17 MS 5080	BZZA #18 MS 5080	BZZA #19 MS 5080	BZZA #20 MS 5080	BZZA #21 MS 5080	BZZA #22 MS 5080	BZZA #23 MS 5080	BZZA #24 MS 5080	BZZA #25 MS 5080	BZZA #26 MS 5080	BZZA #27 MS 5080	BZZA #28 MS 5080	BZZA #29 MS 5080	BZZA #30 MS 5080



NOTE: This plot is for assessment purposes only and does not represent a survey. No liability is assumed as to the accuracy of the data delineated herein. Use of this plot for other than assessment purposes is forbidden unless approved by the Eureka County Assessor's Office.

LYNN MINING DISTRICT

EUCDAS/NOV 2005/WH

SCALE: 1"=1800'

EUREKA COUNTY