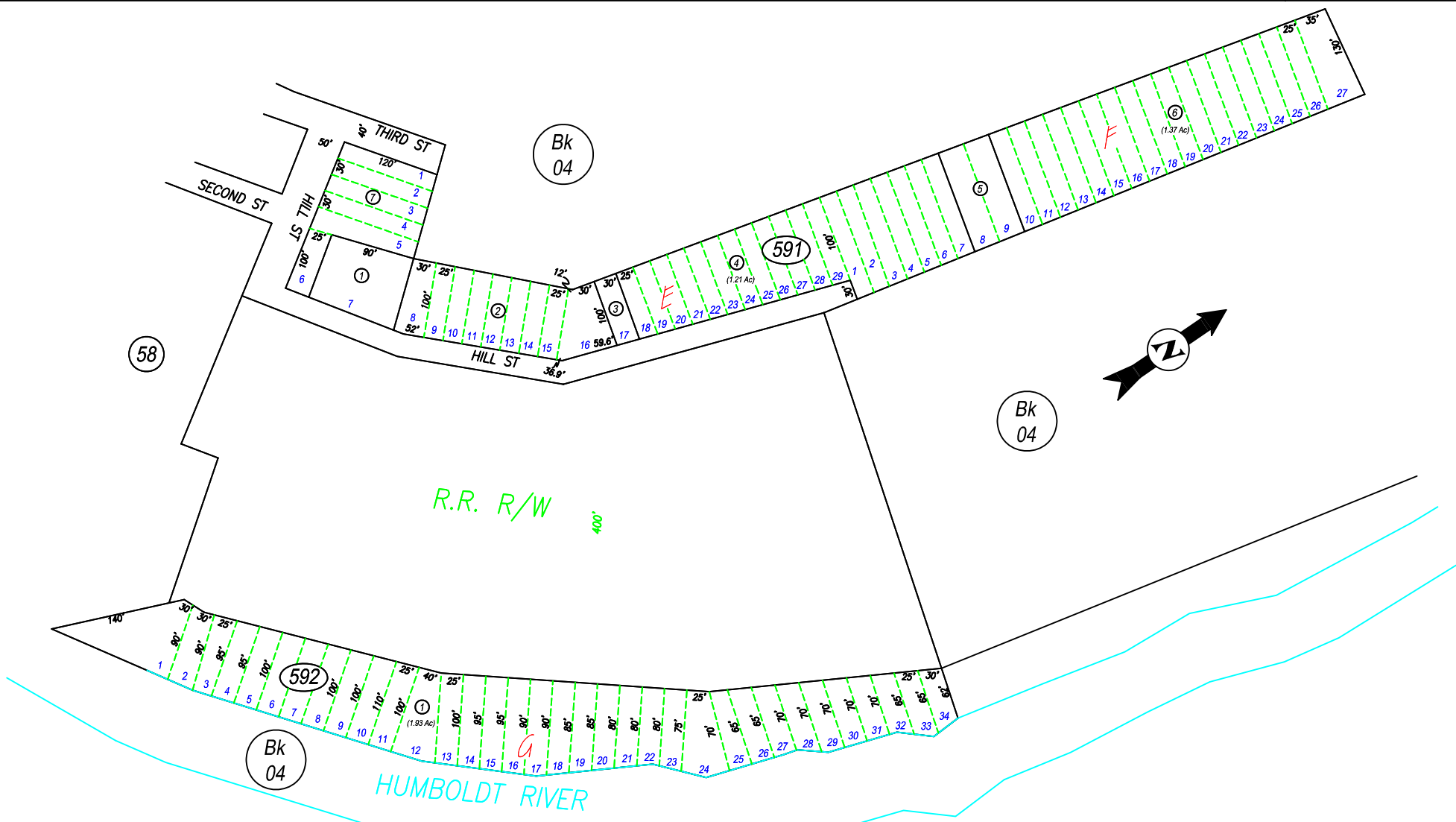


Por. of Sec. 36; T32N, R51E

03-59



NOTE: This plat is for assessment purposes only and does not represent a survey. No liability is assumed as to the accuracy of the data delineated herein. Use of this plat for other than assessment purposes is forbidden unless approved by the Eureka County Assessor's Office.

NOTE: ASSESSOR'S BLOCK NUMBERS SHOWN IN ELLIPSES. ASSESSOR'S PARCEL NUMBERS SHOWN IN CIRCLES.

PALISADE

EUREKA COUNTY

EUCDAS/DEC 99/111

SCALE: 1"=125'

