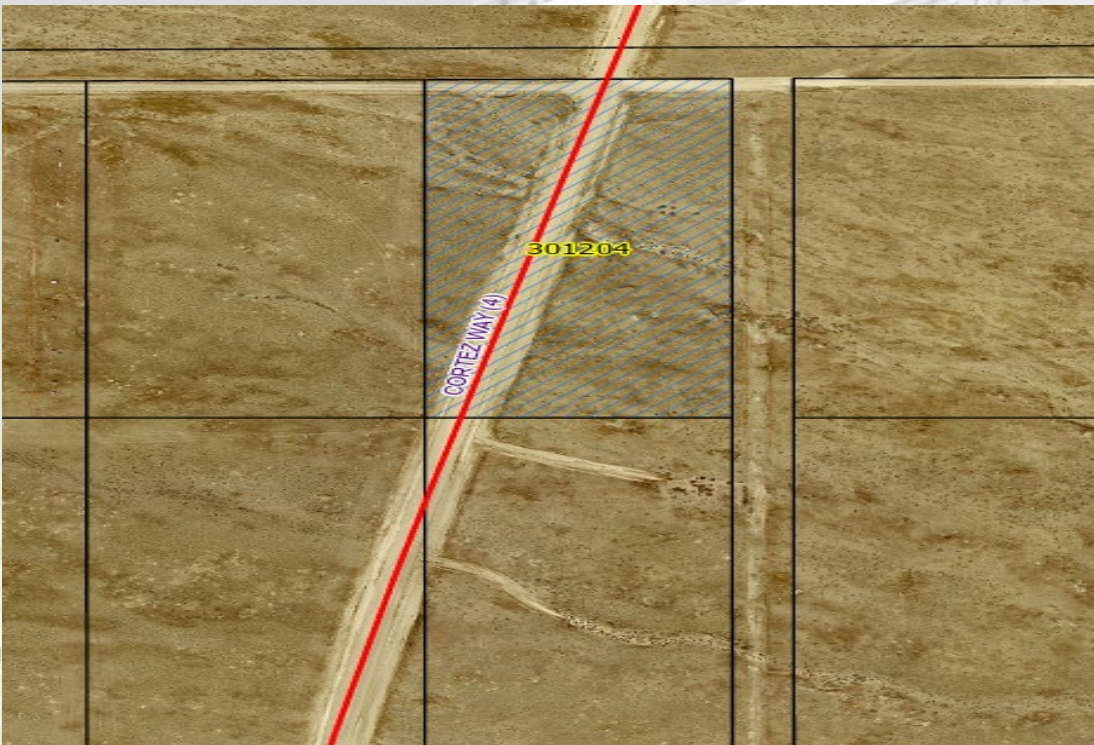


# 2026 Eureka County Delinquent Tax Auction

- This packet is to provide general information regarding the parcels being auctioned
- Additional location information can be obtained by entering the parcel number in the **Eureka County GIS Parcel Finder App** on our website
- [www.Eurekacountynv.gov](http://www.Eurekacountynv.gov)

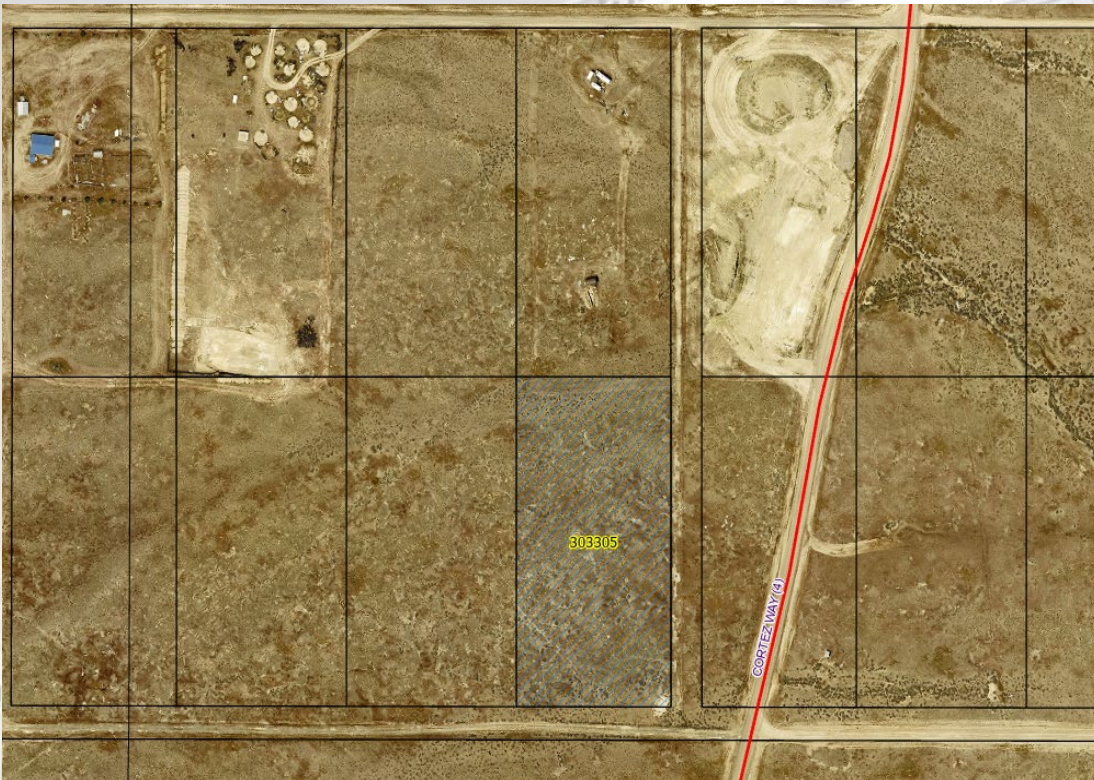
- APN: 003-012-04
- CVR&F UNIT #3
- 4.45 Acres
- Minimum Bid: \$366.77



Taxes Due and Minimum Bid are subject to  
change prior to auction



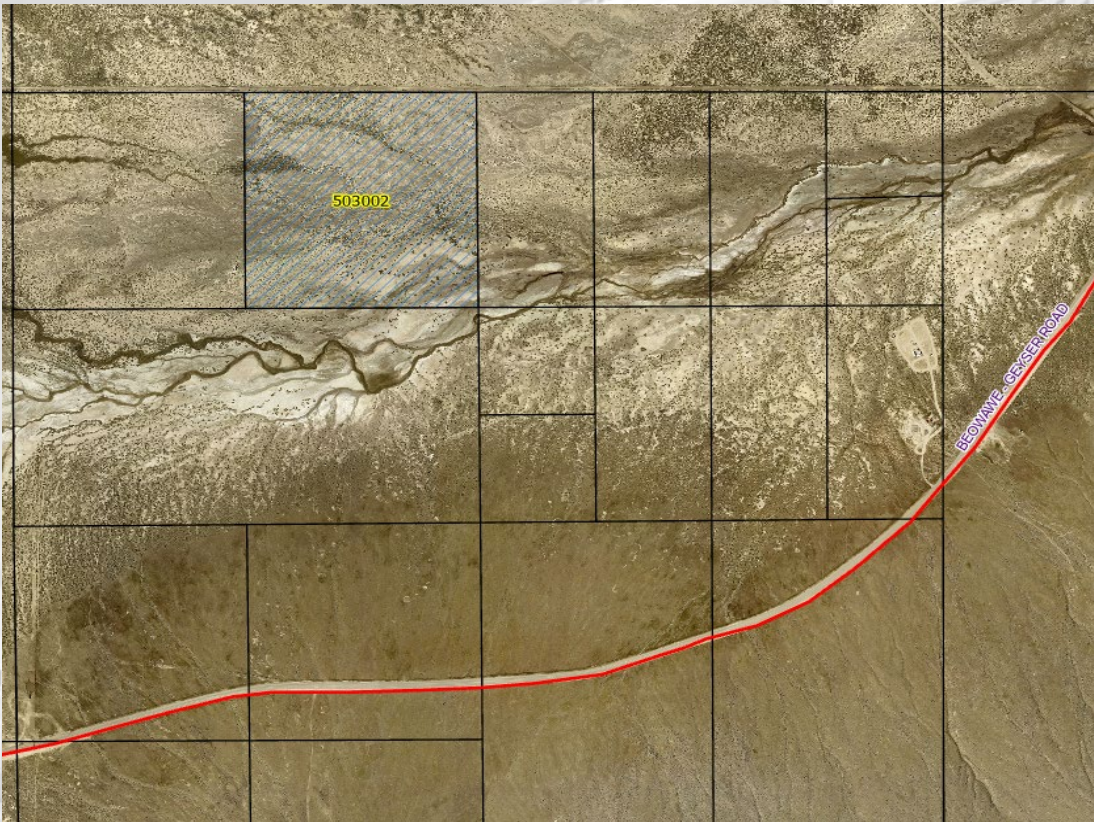
- APN: 003-033-05
- CVR&F UNIT #3
- 4.11 Acres
- Minimum Bid: \$350.22



Taxes Due and Minimum Bid are subject to change prior to auction



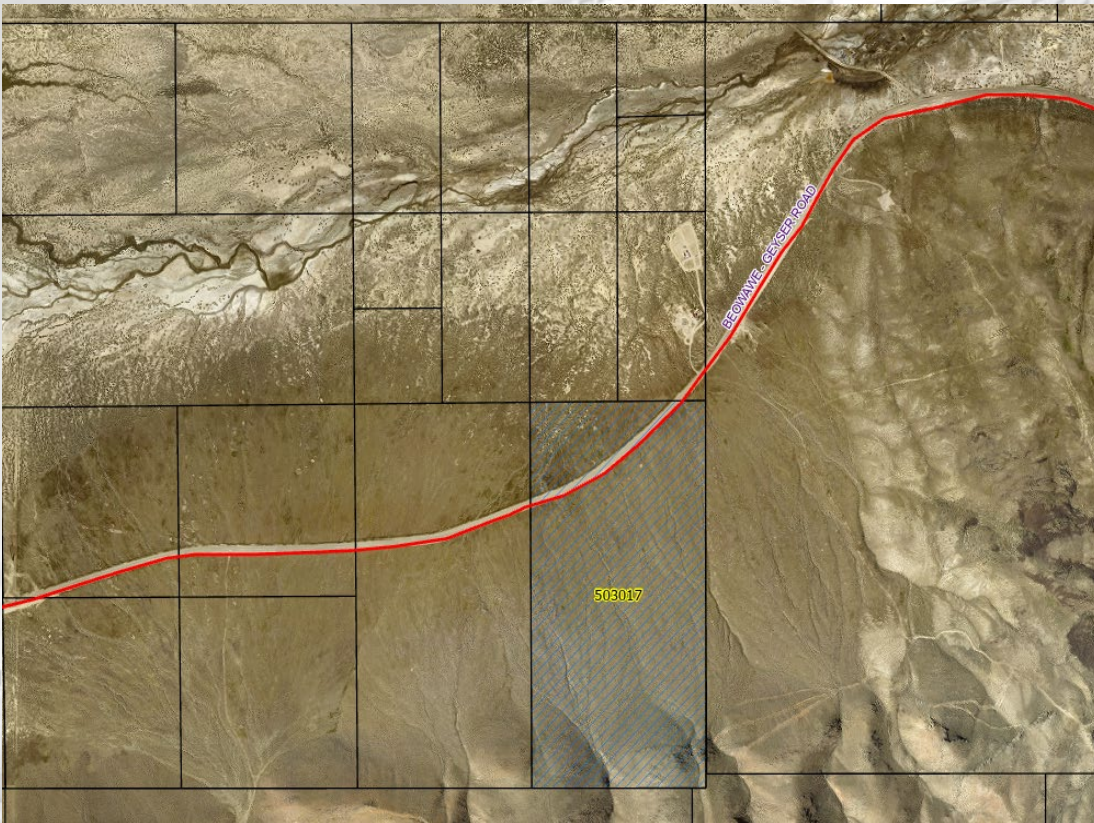
- APN: 005-030-02
- General County
- 40 Acres
- Minimum Bid: \$578.46



Taxes Due and Minimum Bid are subject to change prior to auction



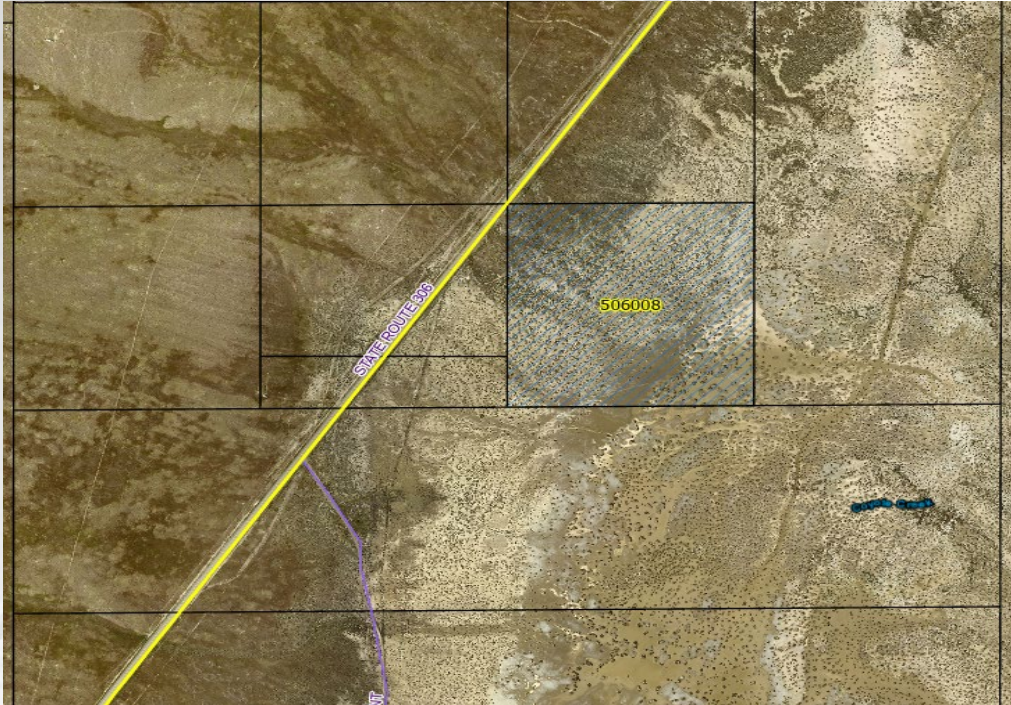
- APN: 005-030-17
- General County
- 82.12 Acres
- Minimum Bid: \$830.44



Taxes Due and Minimum Bid are subject to change prior to auction



- APN: 005-060-08
- CVR&F UNIT #4
- 40 Acres
- Minimum Bid: \$578.46



Taxes Due and Minimum Bid are subject to change prior to auction



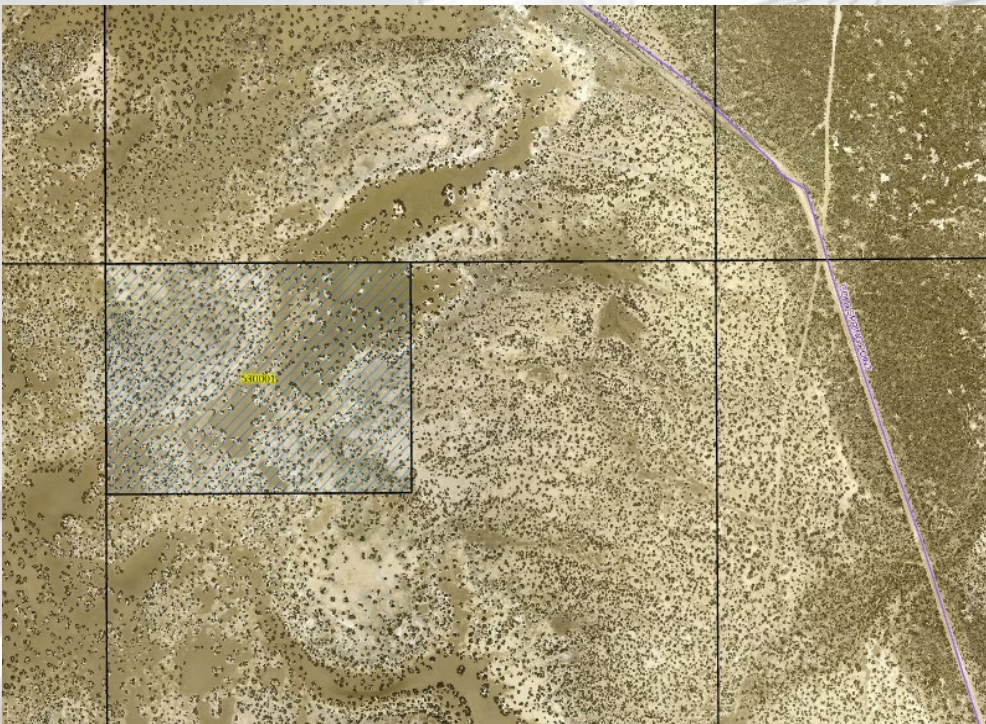
- APN: 005-070-04
- General County
- 9.81 Acres
- Minimum Bid: \$414.01



Taxes Due and Minimum Bid are subject to change prior to auction



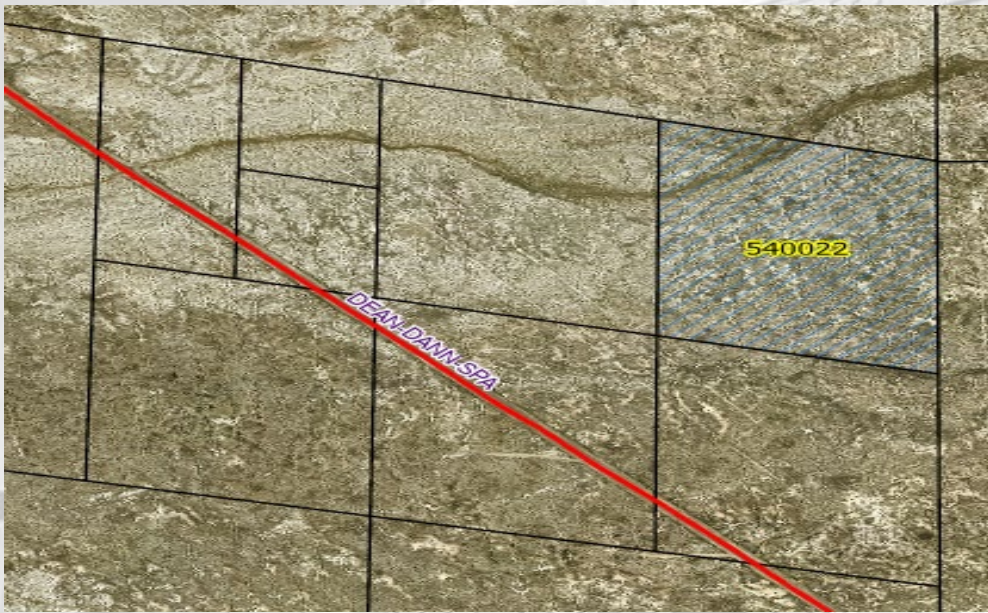
- APN: 05-300-01
- General County
- 13.88 Acres
- Minimum Bid: \$460.58



Taxes Due and Minimum Bid are subject to  
change prior to auction

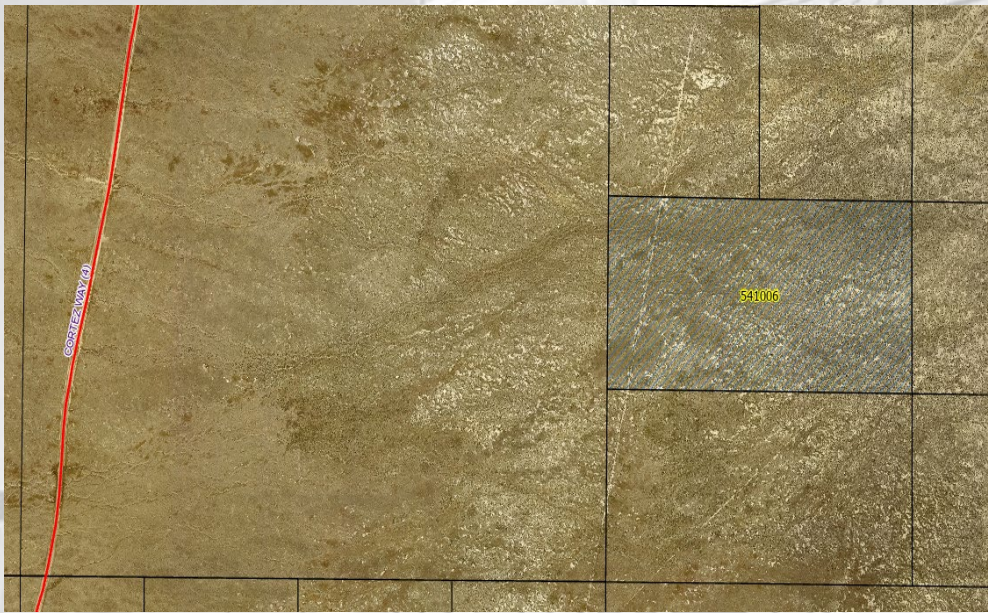


- APN: 005-400-22
- General County
- 40.00 Acres
- Minimum Bid: \$557.58



Taxes Due and Minimum Bid are subject to change prior to auction

- APN: 005-410-06
- General County
- 80 Acres
- Minimum Bid: \$864.23



Taxes Due and Minimum Bid are subject to  
change prior to auction



- APN: 005-460-06
- General County
- 34 Acres
- Minimum Bid: \$556.42



Taxes Due and Minimum Bid are subject to change prior to auction

- APN: 005-470-16
- General County
- 10.85 Acres
- Minimum Bid: \$425.91



Taxes Due and Minimum Bid are subject to change prior to auction

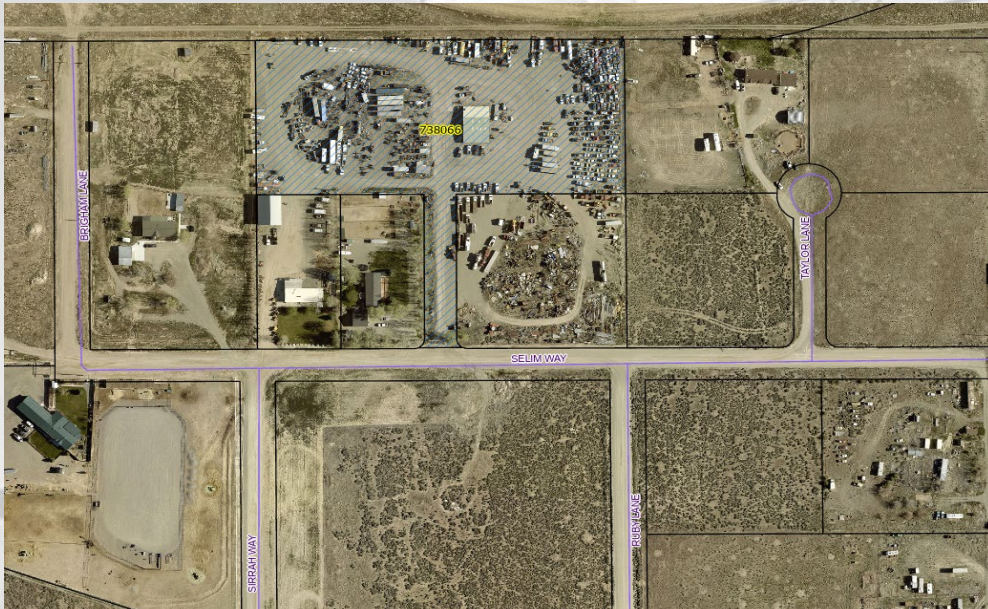


- APN: 007-380-20
- Diamond Valley
- 4.79 Acres
- Minimum Bid: \$2,707.82



Taxes Due and Minimum Bid are subject to change prior to auction

- APN: 007-380-66
- Diamond Valley
- 5.45 Acres
- Minimum Bid: \$2,700.15



Taxes Due and Minimum Bid are subject to change prior to auction



- APN: 009-230-08
- Eureka Mining Property
- Clipper (1/12), Eureka (1/12), Keystone (1/12)
- Minimum Bid: \$315.45



Taxes Due and Minimum Bid are subject to change prior to auction