



SHERIFF

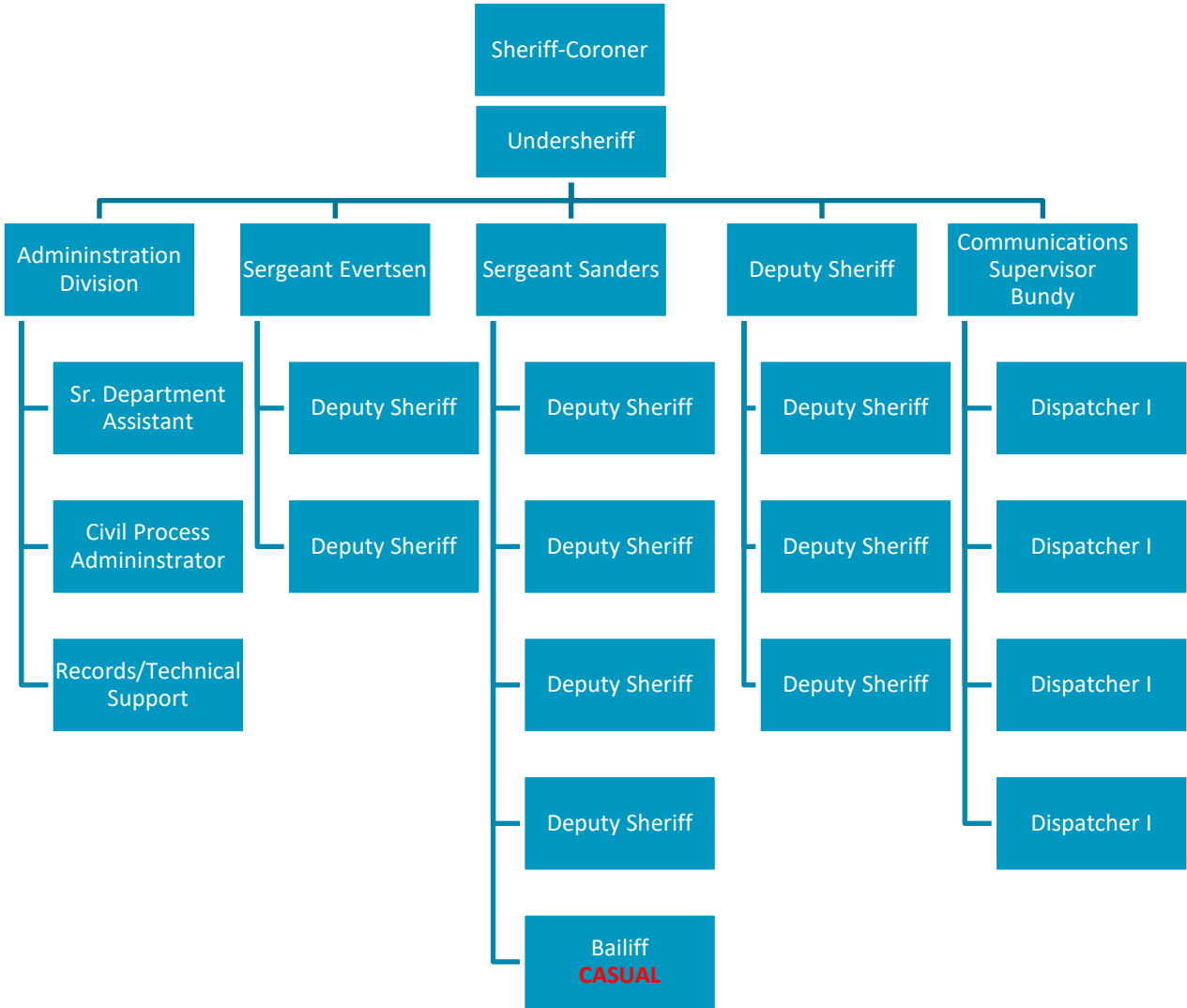
EUREKA COUNTY



2021 Staffing & Budget Request

Currently, E.C.S.O. is allocated 22.5 FTEs.
Current vacancies
 Bailiff (Casual)
 Records/Technical Support

2020 ORGANIZATIONAL CHART



I ask for the additional 5 positions, to include in the Northern Area Command, Southern Area Command and the addition of a Dedicated Traffic Deputy

The following are the requested 2021/2022 Positions.

2 Patrol (Eureka)

2 Patrol (Crescent Valley)

1 Traffic Safety/Flex Deputy (County Wide)

5 Total Positions

These additional positions are explained below.

I am asking for two patrol positions in the Southern Area Command. These positions will allow us to have adequate staffing to cover the scheduling requirements to best protect the citizens and visitors of Eureka County.

This will allow us to have two Deputies on shift, 12 hours a day. This staffing level will allow for Training, Vacation time, Sick time, COVID Leave, etc. to be covered, minimizing or eliminating overtime

This will also allow for the Southern Sergeant to overlap with both of the squads, which is necessary for the effective supervision, proper evaluations of employee's and increases the frontline leadership to the staff. This will allow us to have a Sergeant on duty and available 7 days a week in the county, which reduces liability for lack of supervision.

I am asking for two additional Patrol Deputies in Crescent Valley. Having four Patrol Deputies and Sergeant Evertsen in Crescent Valley allows us to provide 24 hours of service, 7 Days a week. This will decrease fatigue, burnout and call outs, which also reduces overtime. Currently, Deputies from Eureka have to go to Crescent Valley to cover for Annual leave, Sick Leave, Trainings, Etc.

This will also allow for Sergeant Evertsen to overlap with both of the squads, which is necessary for the effective supervision, proper evaluations of employee's and increases the frontline leadership to the staff. This will allow us to have a Sergeant on duty and available 7 days a week in the county, which reduces liability for lack of supervision.

Traffic Safety Unit Deputy

With 2019 being the deadliest year in Eureka County History for Fatal Traffic Crashes (7 fatalities), and in 2020, we had two fatal crashes. Both of 2020's fatal crashes were on SR278. With Zero Nevada Highway Patrol Troopers stationed in Eureka County, we are at a huge disadvantage for Traffic Safety. I feel it's important to make Traffic Safety a

priority. This Deputy would be assigned on a rotating schedule, making sure they focus on all areas of Eureka County, not just one township, road, highway, etc. This Deputy would respond as back up to calls for service when needed, and if necessary could offset the schedule on a case by case basis, which would reduce overtime, call out, etc.

The primary function of these Deputies would be Traffic Safety, conducting Traffic stops, Commercial Vehicle Enforcement (MCSA Grants Available), Hosting public education seminars, managing our Joining Forces Traffic Safety Grant.

Personnel Request Synopsis:

With the growth currently happening in Eureka County from the mining industry, as well as the influx of population, major calls for service, violent crimes and drug activity, our communities need as many boots on the ground as we can get in order to make sure our Deputies, Communities and Inmates stay as safe as possible.



COMPARABLES

Eureka County Sheriff's Office – 22.5 FTE

Population: 2,200 ~ County Size: 4,180 Square Miles
Patrol: 7, Detentions: 5, Dispatch: 5, Administration: 5

Lander County Sheriff's Office – 40.5 FTE

Population: 5,693 ~ County Size: 5519 Square Miles
Patrol: 16, Detentions: 9.5, Dispatch 6FT, 2 PT, Administration: 8

White Pine County Sheriff's Office – 35FTE

Population: 9,600 ~ County Size: 8,897 Square Miles
Patrol: 20, Detentions: 7, Dispatch: 5, Administration: 3

Storey County Sheriff's Office – 32

Population: 4,050 ~ County Size: 264 Square Miles
Patrol: 20, Detentions: 9, Administration: 3

Lincoln County Sheriff's Office – 26.5

Population: 5,223 ~ County Size: 10,637 Square Miles
Patrol: 12, Detentions: 8, Dispatch: 5FT, 1 PT, Administration: 1

Mineral County Sheriff's Office – 25

Population: 4,457 ~ County Size: 3,813 Square Miles
Patrol: 14, Detentions: 5, Dispatch: 5, Administration: 1*

Pershing County Sheriff's Office – 20

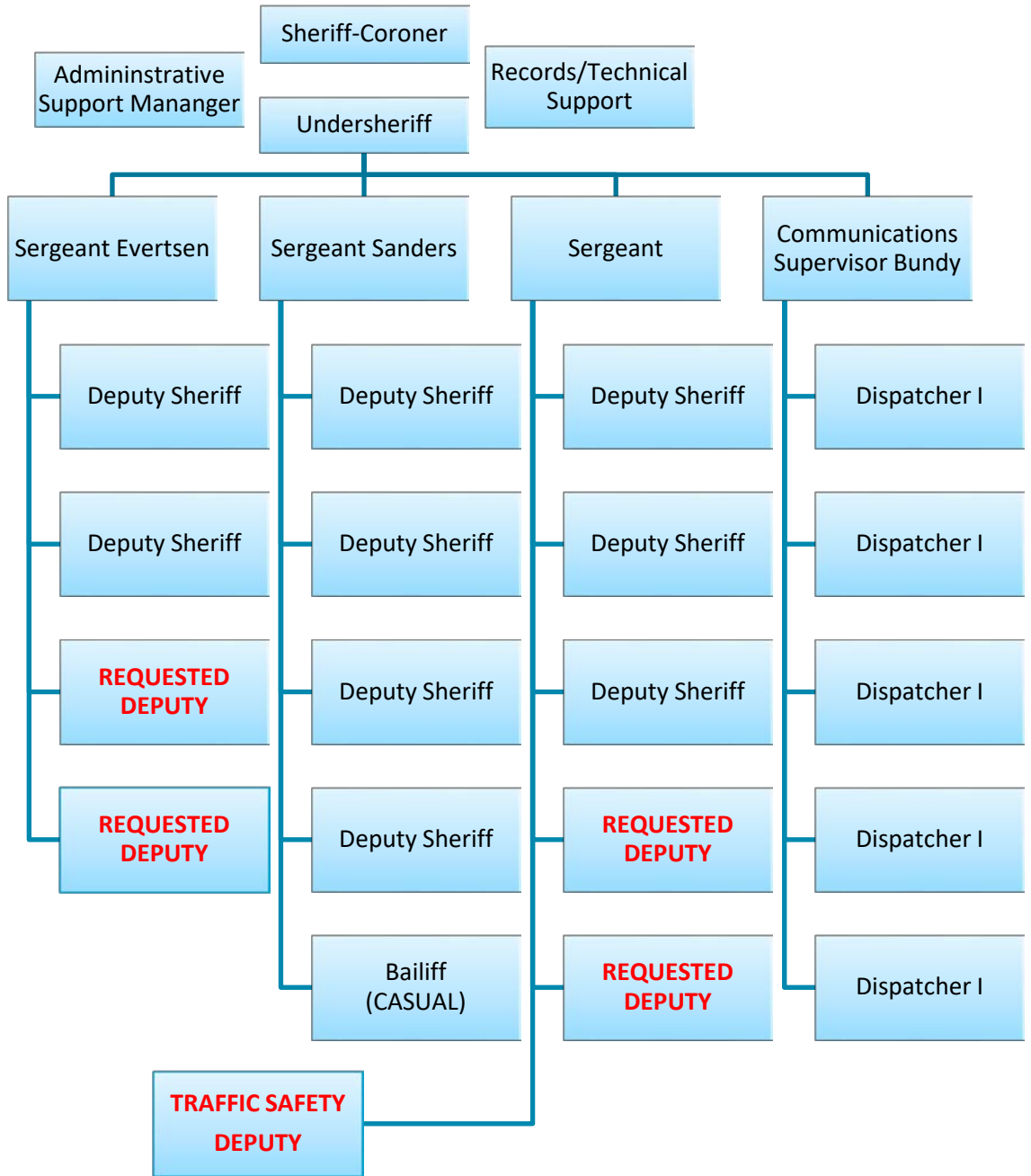
Population: 6,508 ~ County Size: 6,607 Square Miles
Patrol: 8, Detentions: 5, Dispatch: 5, Administration: 2

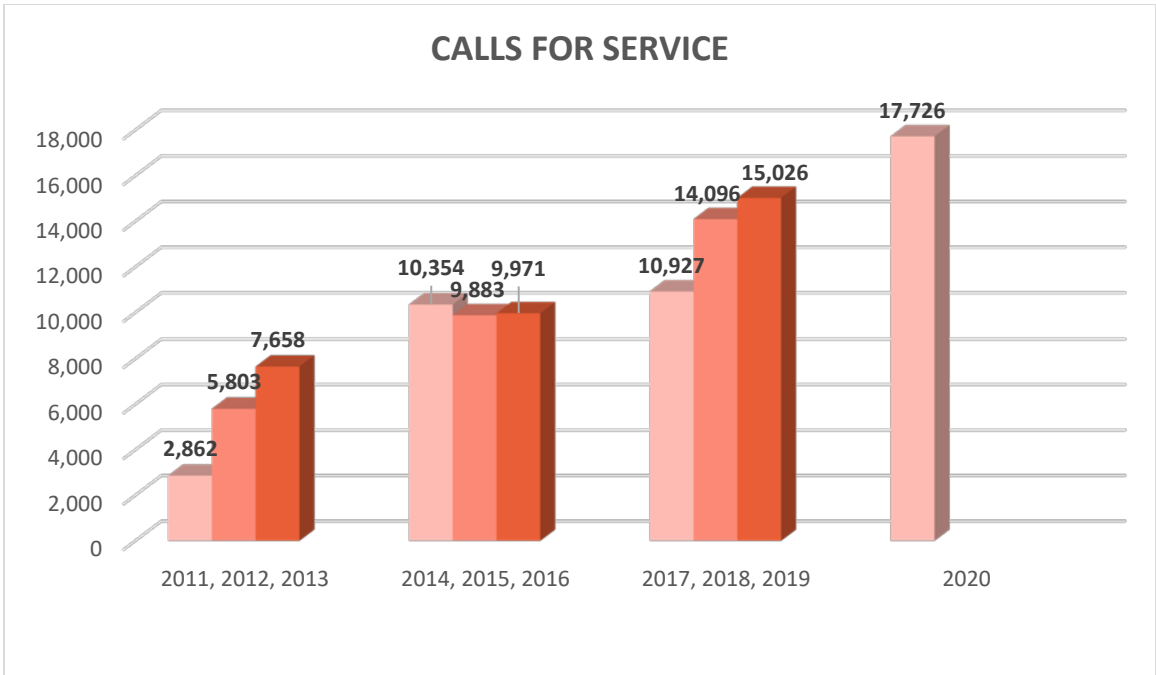
Pershing County has multiple other law enforcement agencies in the county.

Esmeralda County Sheriff's Office - 17

Population: 850 ~ County Size: 3,589 Square Miles
Patrol: 6, Detentions: 5, Dispatch: 5, Administration: 1

PROPOSED 2021 ORGANIZATIONAL CHART





Calls for Service by Year

- 2011*- 2,862* -RIMS Implemented, Partial Year Only
- 2012-5,803 (23 FTE)
- 2013-7,658 (23 FTE)
- 2014-10,354 (22 FTE)
- 2015-9,883 (22 FTE)
- 2016-9,971(23 FTE)
- 2017-10,927 (18 FTE)
- 2018**-14,096 (18 FTE) **-McEwen Mining Opened
- 2019-15,026 (19 FTE)
- 2020- 17,736 (22 FTE, 1 Casual)

Services & Supplies ~ \$50,000

Decrease of \$15,000

General Services & Supplies, New Computers, EDispatches, Center for Change, ID Card Machine for C.V., Camera Contract

K9 Unit Expenses ~ \$10,000

New Line Item - \$10,000

Medical Bills, Food, Care and Training Equipment for our K9 Unit

Range Expenses ~ \$10,000

Increase of \$2,500

Increase in Range Training, CCW Classes, and Cost of Ammo

Policy & Procedure ~ \$5,000

Decrease of \$10,000

Reduction due to set Annual Fee, initial investment of new policy manual was done in 2020.

Machine Maintenance ~ \$70,000

Increase of \$5,000

Axon Body Camera, Taser, Dash Camera Contract, Increase in Copy Machine Maintenance for CV Copy Machine to be covered.

Jail Maintenance ~ \$40,000

Same as 2020 Budget

Industrial Washer & Dryer for Jail, Southern Folgers Yearly Service Contract.

Safety Equipment ~ \$5,000

Increase of \$2,000

Purchase of Ballistic Shields for Patrol Staff to carry in Patrol Units.

Travel/Training ~ \$60,000

Increase of \$5,000

Increased Staff Training, Offset of Per-Diem increase from 2020 Policy Update.

Uniforms ~ \$20,000

Increase of \$5,000

Ballistic Vest Purchases, Increased Staffing uniform costs.

Capital Outlay ~ \$60,000

Increase of \$45,000

Purchase of Camera System for Crescent Valley Sub-Station, Secure Access System for Evidence Rooms in both Eureka and Crescent Valley.

Capital Outlay – Vehicle Purchases

\$275,000

Four Patrol Vehicles, Outfitting, etc - \$240,000

1 K9 Unit (CV)

1 CV Patrol

2 Eureka Patrol

1 Fleet Vehicle (Admin/Training Vehicle) – \$35,000

Capital Project – Detention Center / ECSO Assessment

Jail Capital Project

\$100,000

This Capital Project is for the assessment of what the true cost would be for a Jail Remodel, Update, Modification, or New Construction of the Eureka County Detention Center. The ECSO also needs a new HVAC system, as it is no longer functioning at our demanded level.

Due to the age, and deteriorating status of the Eureka County Detention Center, this process needs a comprehensive review in order to give the Commission a true view of what to forecast in the future.

I appreciate the time to present this document, and Budget Request to you. This request, like my previous requests have taken a true look at the needs of the Eureka County Sheriff's Office. As our County grows, and continues through another "Boom", we must be prepared to take care of our Communities, Citizens, Visitors and Inmates of Eureka County to the best of our ability.

Jesse J. Watts
Sheriff-Coroner