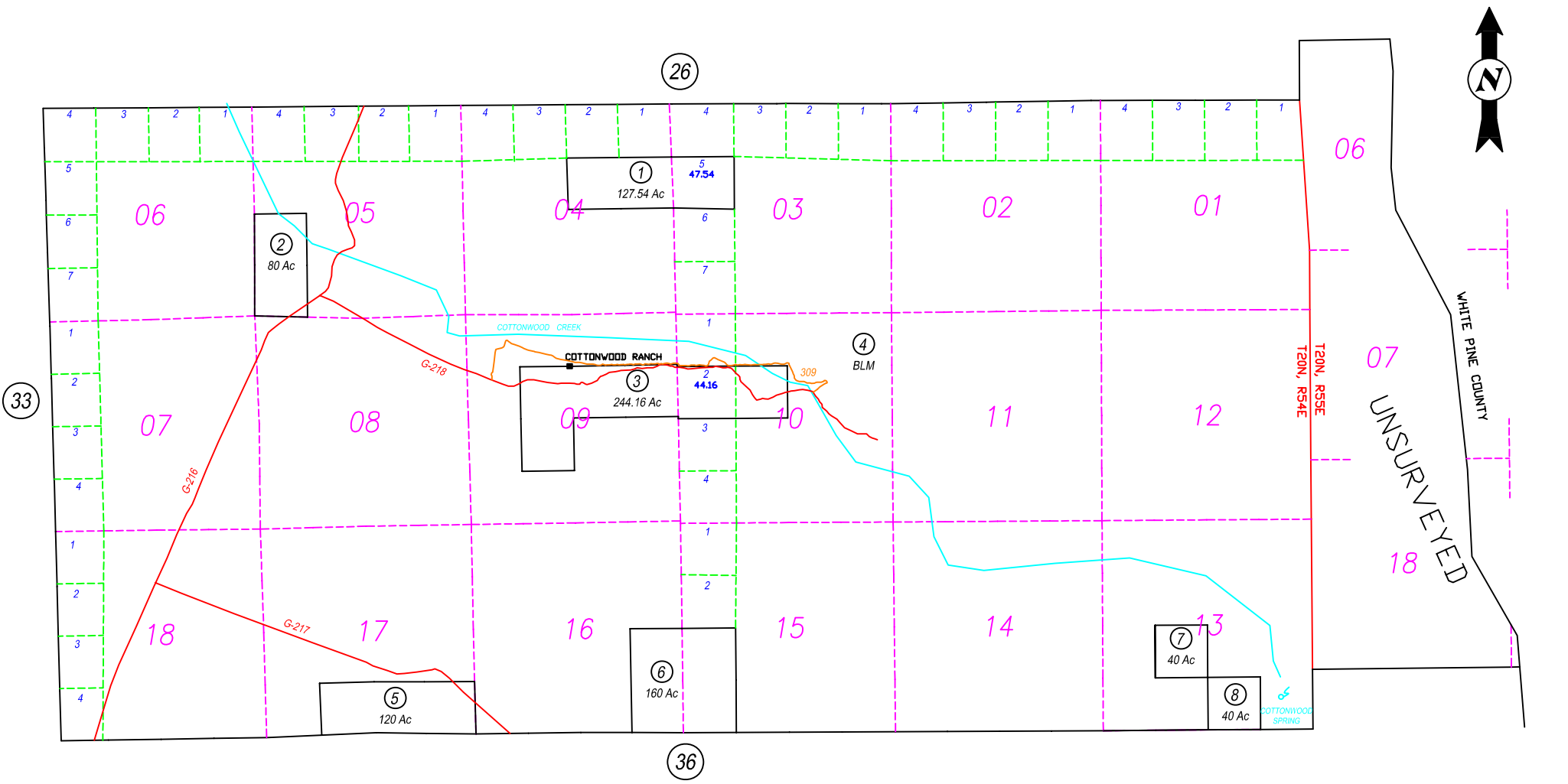


N2 - T20N, R54E - T20N, R55E

07-35



33

26

36



WHITE PINE COUNTY

UNSURVEYED

NOTE: This plot is for assessment purposes only and does not represent a survey. No liability is assumed as to the accuracy of the data delineated hereon. Use of this plot for other than assessment purposes is forbidden unless approved by the Eureka County Assessor's Office.

EUCDAS/JAN 2000/11H
SCALE: 1"=2500'

EUREKA COUNTY