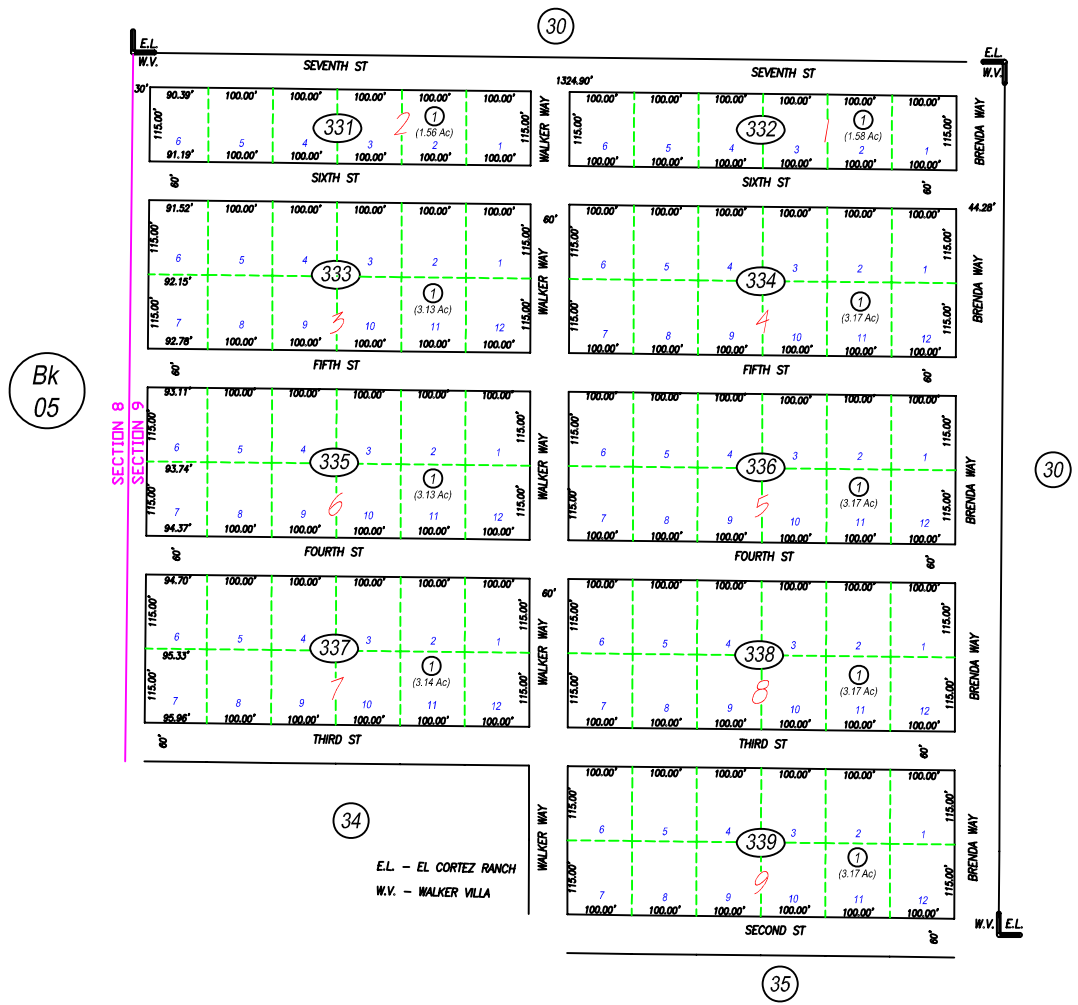


Por. of Sec. 9; T29N, R48E

03-33



Bk 05

NOTE: This plat is for assessment purposes only and does not represent a survey. No liability is assumed as to the accuracy of the data delineated hereon. Use of this plat for other than assessment purposes is forbidden unless approved by the Eureka County Assessor's Office.

WALKER VILLA SUBDIVISION

EUCDAS/DEC 99/111  
SCALE: 1"=200'

EUREKA COUNTY

NOTE: ASSESSOR'S BLOCK NUMBERS SHOWN IN ELLIPSES.  
ASSESSOR'S PARCEL NUMBERS SHOWN IN CIRCLES.

