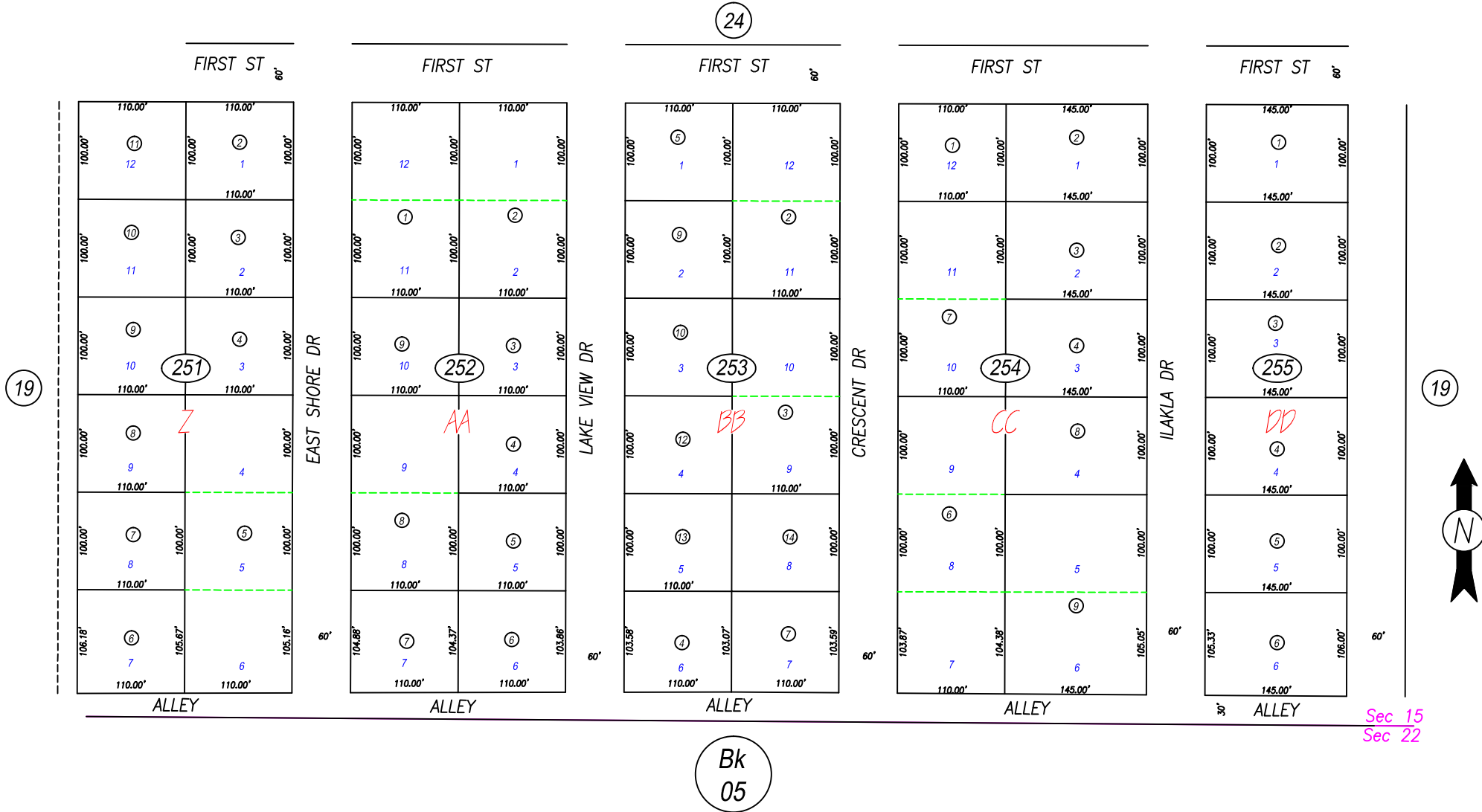


Sec. 15, T29N, R48E

03-25



NOTE: This plat is for assessment purposes only and does not represent a survey. No liability is assumed as to the accuracy of the data delineated hereon. Use of this plat for other than assessment purposes is forbidden unless approved by the Eureka County Assessor's Office.

REV/EUCDAS/MAR2013/1M
 REV/EUCDAS/MAY2015/1M
 REV/EUCDAS/JAN2016/1M
 REV/EUCDAS/NOV2011/1M

NEVELCO INC
 UNIT 2

EUCDAS/DEC 99/1M
 SCALE: 1"=100'

EUREKA COUNTY

NOTE: ASSESSOR'S BLOCK NUMBERS SHOWN IN ELLIPSES.
 ASSESSOR'S PARCEL NUMBERS SHOWN IN CIRCLES.

